

See page 28
Rabbi Irving J. Blak - was in 1982 Appointed Jewish National Chaplain

The Jewish Veteran

(Issued Friday 7-15-83) HS.

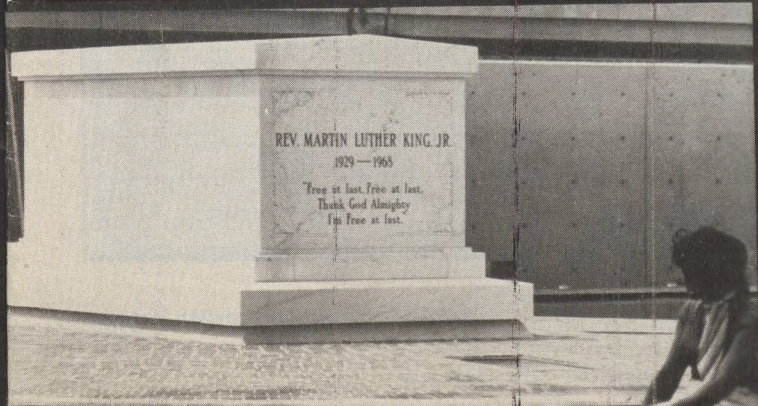
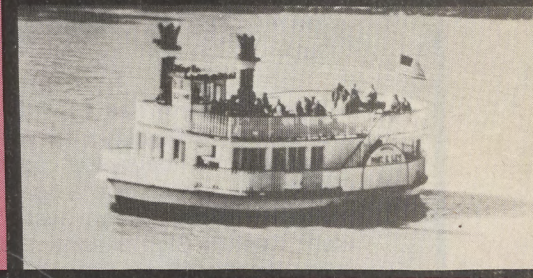
July/August 1983

88th

ANNUAL CONVENTION

August 14-21
Atlanta, Georgia

Shalom Y'All



Join with other dedicated, committed Jewish war veterans to further the ideals and projects of JWV. Your \$100.00 or more annual contribution enables your organization to pursue those special programs which maintain and increase the vitality of JWV. Join the elite!

Count Yourself in the Century Club

But I pay my dues, you might say. As you know, however, your dues have not kept pace with inflation. JWV could not function if your organization were dependent solely on dues. Dues only account for 40% of JWV's budget; the remaining 60% depends on contributions from many sources and programs. Century Club members are a special, elite, dedicated group who realizes the importance of their contribution to the continued success of JWV.

Just How Does My Contribution Count?—you may ask. In the past, Century Club funds have been used to defray the costs of special publications like "ExpLOsion in Terror" and "Israel and the USA." Century Club dues were used towards retiring the loan on the data processing system, which is providing more efficient handling of membership information and other data. The computer system is important to all JWV programs, whether they be connected with veterans benefits or with fighting anti-Semitism. The only bug remaining in the computer system is the remaining debt; hopefully your generosity and contribution to the Century Club will remove this "bug."

How Do I Count as a Century Club Member?—you may ask. As a Century Club member, you will be recognized at a members-only cocktail party at the National Convention and receive a special gift as a token of appreciation. In addition, because of their dedicated commitment, Century Club members will be added to a mailing list to receive all special mailings (information bulletins, press releases, etc.) from National Headquarters. Of course, the true honor of Century Club membership comes from the realization that the tax deductible contribution allows your historic organization to continue its important work.

Count yourself in! Please fill out the form below and mail it with your check, made payable to JWV Century Club, to JWV National Headquarters, 1712 New Hampshire Ave., N.W., Washington, D.C. 20009.

From May 2, 1983 to June 16, 1983, the following JWVs counted themselves in Century Club.

Manuel Auerbach
Silver Spring, MD

Abe Baker
Miami, FL

Warren S. Dolny
Monsey, NY

Herbert Drapkin
Great Neck, NY

Morton Dudowitz
Stamford, CT

Edward M. Hyans, Jr.
New Rochelle, NY

Edward Lettick
Derby, CT

Jerome Mandel
Decatur, GA

Newton Matty
Flushing, NY

Sam Mindel
W. Palm Beach, FL

Sidney Potlock
Miami, FL

Marshall A. Raff
Gainesville, FL

Abraham Sandler
Windsor, CT

Richard J. Lawson
Bankers United Life
Assurance Co.

Group Plan Administrators,
Inc. Chicago, IL

Fred Robbins Post
#142

Stamford, CT

Enclosed is my tax deductible contribution, made payable to JWV Century Club.

\$100

\$200

\$250

\$500

\$1,000

Name _____

Address _____

City, State & Zip _____

Post # _____ Department _____

Send coupon and check to: JWV, 1712 New Hampshire Ave., N.W., Washington, D.C. 20009.